



ETI Power

TOD Meter  
Multifunction Meter  
Power & Energy Meter

# Digital Panel Meter

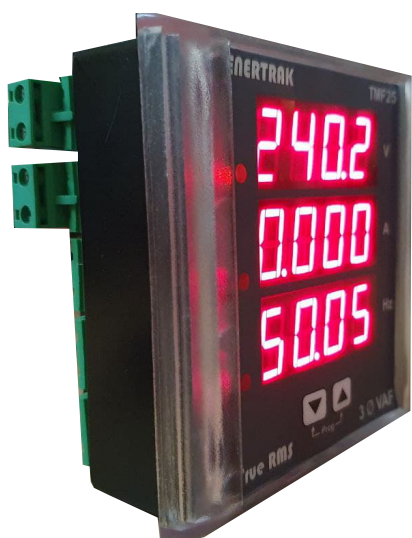
VAF Meter (TMF25)

1.0 Class Accuracy



## Description

- The Basic Series Meters are low cost micro-processor based metering instruments with 24 Bit ADC and SMPS / Capacitor based power supply unit



## Key Features

- The meters have been designed to meet the harsh conditions of Indian Utilities and have following special features :
  - Robust Design
  - 4 Digit Red Bright FND Display
  - Programmable on site CT ratio
  - Password Protection
  - LED Indication for Healthy Phase
  - Electrical Control Panels
  - Motor Control Panels
  - DC Drive Control Panels
  - Battery Chargers
  - HT / LT Panels



INTERNATIONALLY  
RECOGNISED  
ISO 9001, ISO 14001 CERTIFIED COMPANY

## Technical Specification

### ELECTRICAL CHARACTERISTICS

- Type of measurement : AC
- Current : CT Operated
- Class of Accuracy : Class - 1.0
- Voltage : Direct Measurement
- Voltage Range : 100-500 Vac
- Accuracy : Class - 1.0
- Frequency : From voltage waveform
- Accuracy : Class - 1.0
- Run Hour : Increasing
- Display : 3 Line LED Display
- Display type : 7 Segment
- Data update rate : 1 sec
- Phase : 1 Ph / 3 Ph
- Connector : Plug Type / Fixed Type
- Burden : Less then 1.5W
- HV : 2kV
- Frequency range : 50Hz  $\pm$  5%
- Primary CT : 1 A - 9999 A
- Secondary CT : 1 A - 5 A
- Measurement range : 40 mA - 6 A
- Permissible overload : 6 A continuous
- AC Power Supply : 100 - 277 V AC at 50 Hz
- DC Power Supply : 100 - 277 V DC

### MECHANICAL CHARACTERISTICS

- Weight : 0.500kg to 0.250kg (Shipping)
- IP degree of protection: Front: IP 51; Back: IP 40
- Dimensions : Bezel: 96 x 96 mm
- Depth: 48 mm behind bezel
- Panel cutout: 92 x 92 mm
- Housing : Engineering Plastic
- Front Fascia : Poly carbonate
- e

### ENVIRONMENTAL CONDITIONS

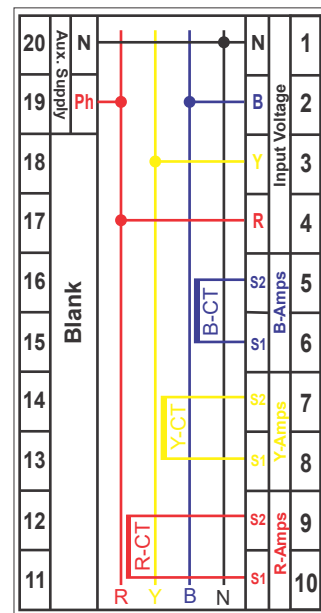
- Operating temperature : 4°C to 60°C
- Storage temperature : 4°C to 70°C
- Humidity rating : 5 to 60 % RH non-condensing

Enertrak maintains a policy of continuous development & reserve the rights to change the details shown on this data sheet without any prior notice. The contents are intended for guidance only.

## Communications (Optional)

- RS-485 port : 2 terminals only
- Baud rate : 9600bps
- Protocols : Modbus

## Connections



**Enertrak**  
Instruments Pvt. Ltd.

IT-3, EPIP, RIICO Industrial Area,  
Sitapura, Jaipur, Rajasthan-302022

[www.enertrak.in](http://www.enertrak.in)

[ak.enertrak@gmail.com](mailto:ak.enertrak@gmail.com)/[raj.enertrak@gmail.com](mailto:raj.enertrak@gmail.com)

+91-9549061797 / +91-8233000062

Registered In India with GST No. 08AACCE6423G1ZT